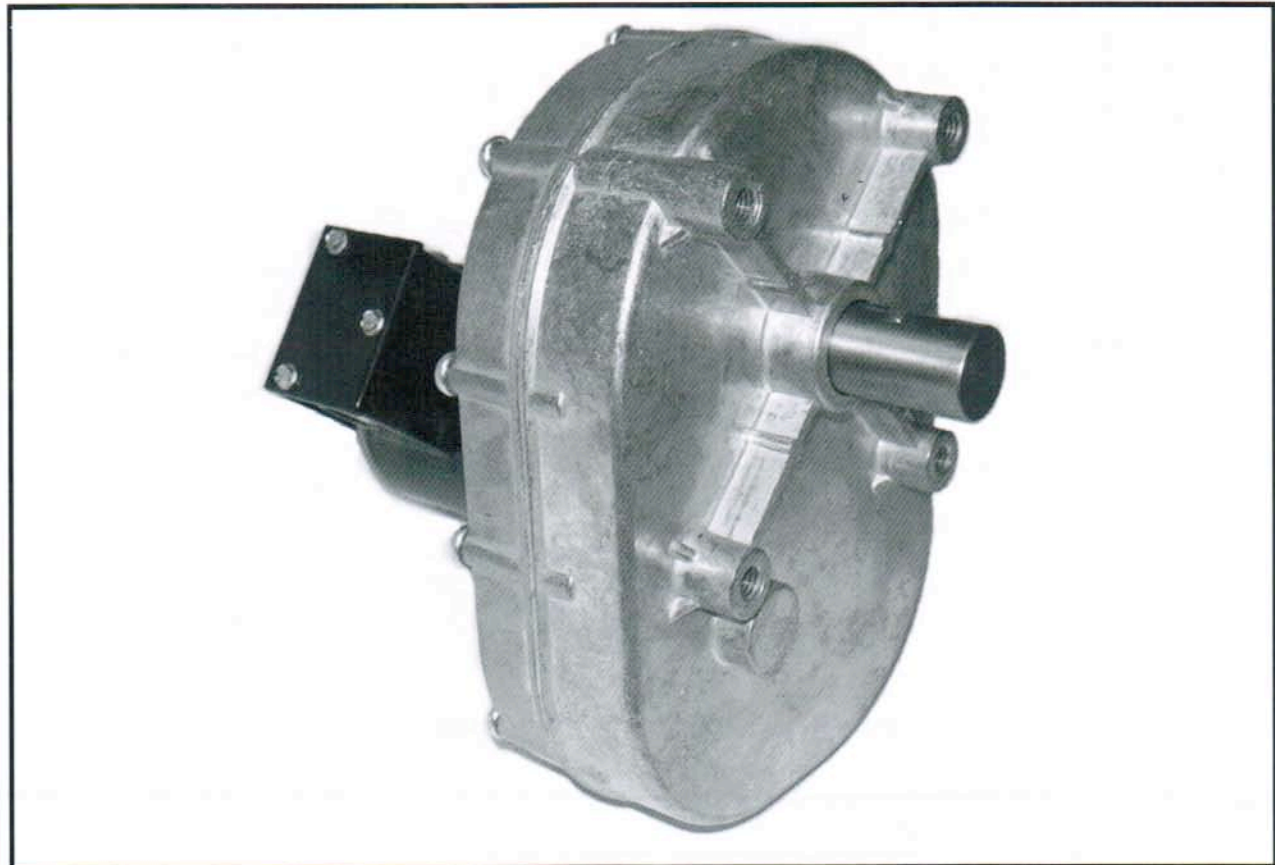


Model K900 Gearmotor 3.3 PSC Motor



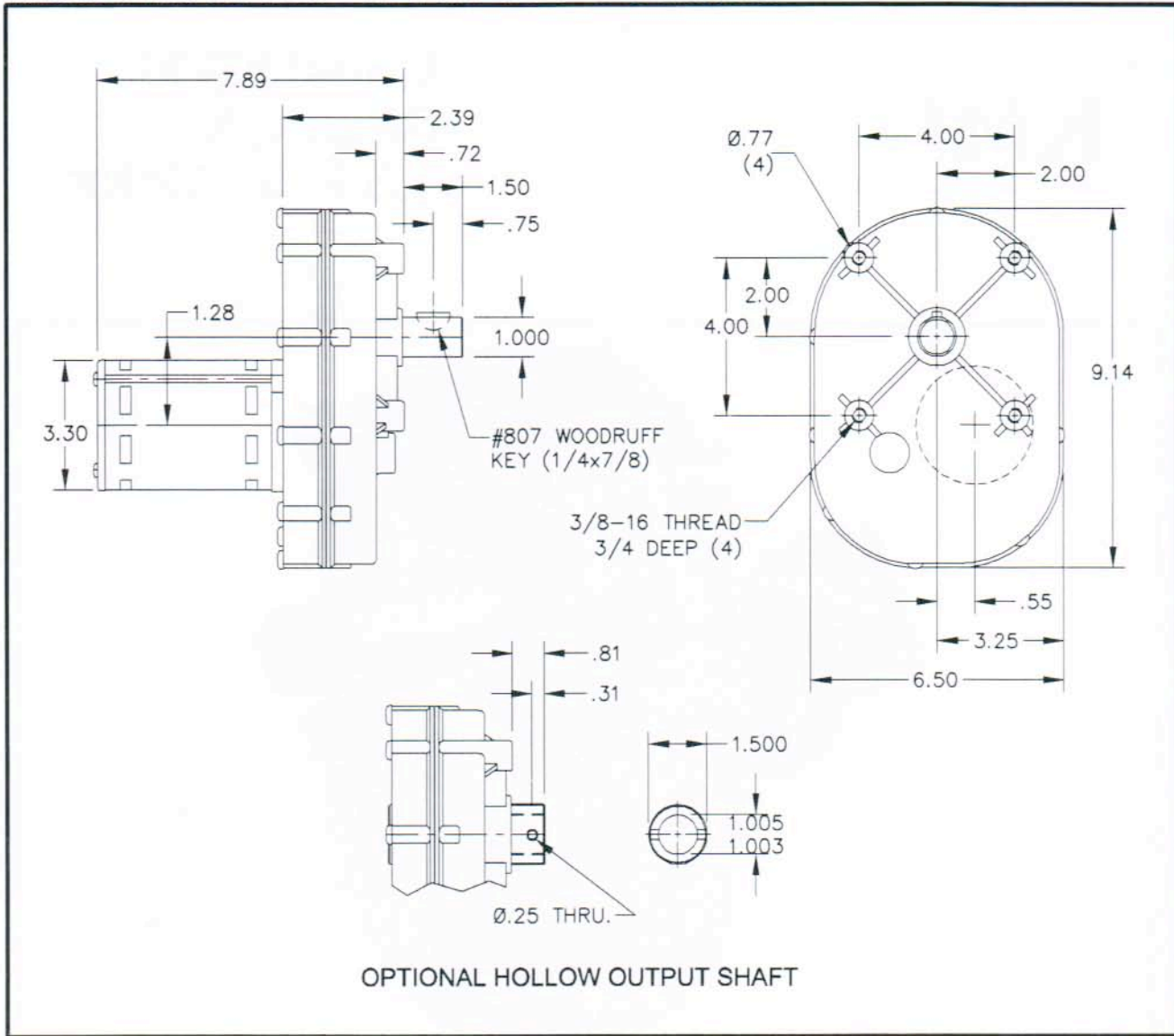
Specifications:

- 1/10 hp 3.3" Permanent Split Capacitor motor
- 115/60 VAC input
- Open, continuous duty motor
- Auto-reset thermal protection
- Ball bearings in motor
- Reversible rotation
- Zinc die-cast housing
- Three standard gear ratios
- Precision helical gears in first reduction
- Oil impregnated bronze bearings on output shaft
- O-ring seal on output shaft
- Permanently lubricated
- All position mount

Options:

- 230 VAC 50/60 Hz input
- Dual 115/230 VAC input
- Needle bearings on output shaft
- 1" ID hollow output shaft
- Double extended output shaft
- Brake mounted on motor
- Consult factory for other options

Model K900 3.3" VENTED PSC Motor



Torque Chart (inch lbs)		
1/10 HP 115 VAC /60 HZ 4-POLE PERMANENT SPLIT CAP.		
RATIO	FULL LOAD RPM	FULL LOAD TORQUE
430:1	4	1140
806:1	2	2100
1561:1	1	4160

Overhung load capacity at .75 from output boss not to exceed 550 lbs.



KLAUBER MACHINE & GEAR COMPANY
 1101 GEARTECH PARKWAY
 PACIFIC, MO. 63069
 PH: (636) 257-3002 FAX: (636) 257-3005
www.klaubergear.com