



Model K100
Gearmotor
48F AC MOTOR



Specifications:

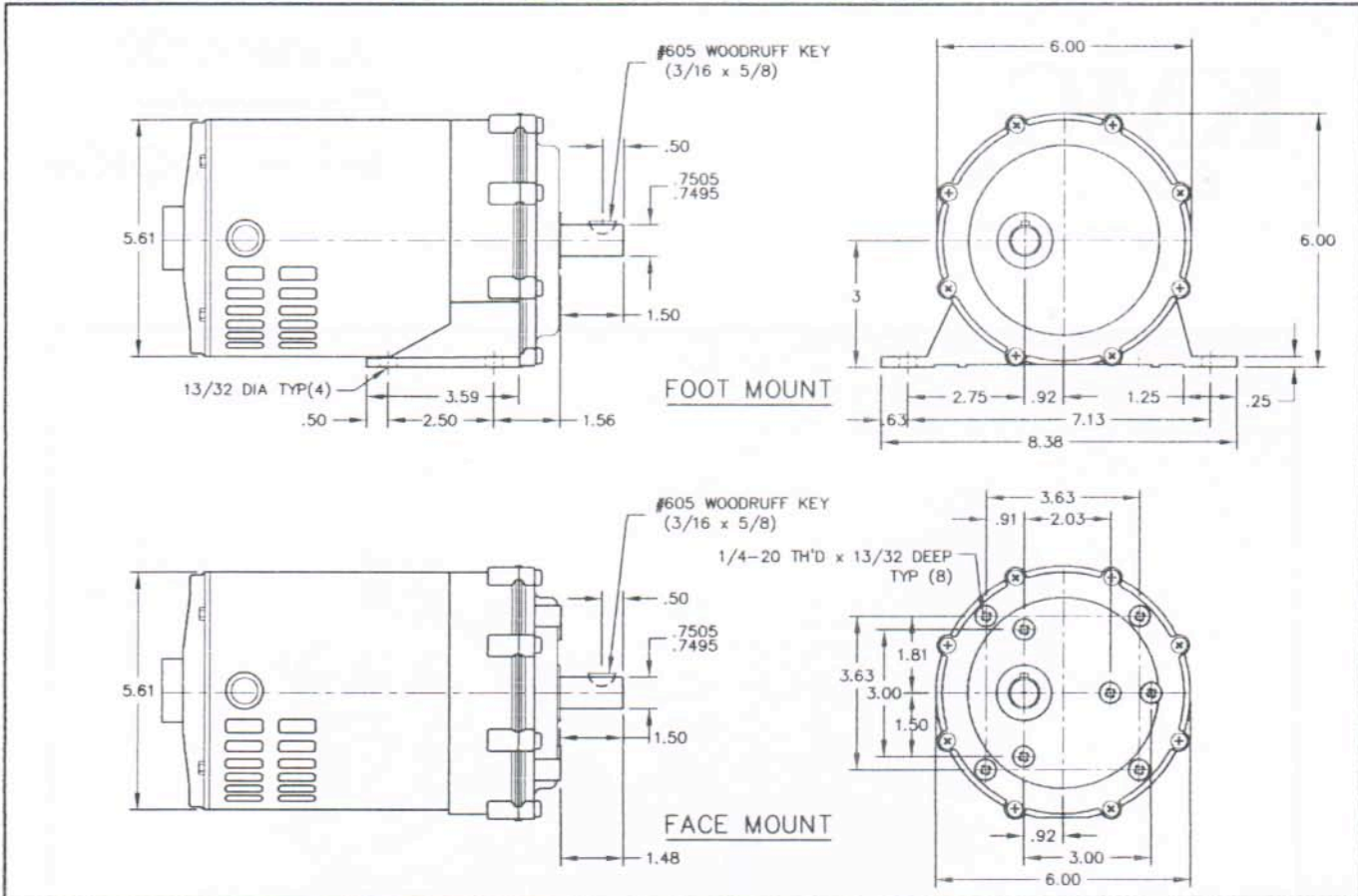
- 1/4 H.P. split phase motor
- 115 VAC, 60 HZ, 1 phase
- Open, continuous duty motor
- Precision helical gears in first reduction
- Seven standard ratios
- Zinc diecast housing
- Ball bearing motor
- Oil impregnated bronze bearings on gear shafts
- O-Ring seal on output shaft
- Permanently lubricated
- All position mount

Options:

- Needle bearings
- Automatic thermal overload
- Face Mount (No Feet)
- Three Phase Motor
- For other options call factory

Note: Painted finish is not standard

Model K100 48FR OPEN AC Motor



Torque Chart (inch lbs):

1/4 HP 115 VAC 60HZ
4 POLE SPLIT PHASE

RATIO	FULL LOAD RPM	FULL LOAD TORQUE
14:1	120	107
20:1	88	148
28:1	60	215
57:1	30	430
94:1	18	600
140:1	12	600
211:1	8	600

(Output Torque is Theoretically Calculated and Gear Limited)

Overhung load capacity (.75" from output boss) not to exceed 300 lbs.



KLAUBER MACHINE & GEAR CO.

1101 GEARTECH PARKWAY

PACIFIC, MO 63069

PHONE (636) 257- 3002 FAX (636) 257- 3005